

इंटरनेट

मानक

### Disclosure to Promote the Right To Information

Whereas the Parliament of India has set out to provide a practical regime of right to information for citizens to secure access to information under the control of public authorities, in order to promote transparency and accountability in the working of every public authority, and whereas the attached publication of the Bureau of Indian Standards is of particular interest to the public, particularly disadvantaged communities and those engaged in the pursuit of education and knowledge, the attached public safety standard is made available to promote the timely dissemination of this information in an accurate manner to the public.

“जानने का अधिकार, जीने का अधिकार”

Mazdoor Kisan Shakti Sangathan

“The Right to Information, The Right to Live”

“पुराने को छोड़ नये के तरफ”

Jawaharlal Nehru

“Step Out From the Old to the New”

IS 771-3-1 (1979): Glazed Fire Clay Sanitary Appliances : Part-3 Specific Requirements of Urinals, Section 1: Slab Urinals [CED 3: Sanitary Appliances and Water Fittings]



“ज्ञान से एक नये भारत का निर्माण”

Satyanarayan Gangaram Pitroda

“Invent a New India Using Knowledge”



“ज्ञान एक ऐसा खजाना है जो कभी चुराया नहीं जा सकता है”

Bhartrhari—Nitiśatakam

“Knowledge is such a treasure which cannot be stolen”



BLANK PAGE



IS : 771 (Part III/Séc I) - 1979  
(Reaffirmed 1997)

*Indian Standard*  
SPECIFICATION FOR  
GLAZED FIRE-CLAY SANITARY APPLIANCES  
PART III SPECIFIC REQUIREMENTS OF URINALS

Section I Slab Urinals  
( Second Revision )

Second Reprint JUNE 1998

UDC 696.141.2 : 666.647

© *Copyright* 1979

**BUREAU OF INDIAN STANDARDS**  
MANAK BHAVAN, 9 BAHADUR SHAH ZAFAR MARG  
NEW DELHI 110002

*Indian Standard*SPECIFICATION FOR  
GLAZED FIRE-CLAY SANITARY APPLIANCES

## PART III SPECIFIC REQUIREMENTS OF URINALS

## Section 1 Slab Urinals

*( Second Revision )*

Sanitary Appliances and Water Fittings Sectional Committee, BDC 3

*Chairman*

SHRI V. D. DESAI

*Representing*

Bombay Municipal Corporation

*Members*

## ADVISER

Central Public Health & Environmental Engineering  
Organization ( Ministry of Works & Housing )SHRI B. B. RAU ( *Alternate* )

SHRI H. R. BADYAL

Indian Iron &amp; Steel Co Ltd, Calcutta

SHRI K. D. BISWAS ( *Alternate* )

SHRI M. K. BASU

Central Glass & Ceramic Research Institute  
( CSIR ), Ahmadabad

SHRI D. S. CHARHAL

Directorate General of Technical Development,  
New DelhiSHRI T. RAMASUBRAMANIAN ( *Alternate* )

SHRI S. P. CHAKRABARTY

Central Building Research Institute ( CSIR ),  
RoorkeeSHRI S. K. SHARMA ( *Alternate* )

CHIEF ENGINEER

Public Health Engineering Department, Government  
of Kerala, TrivandrumSHRI K. RAMACHANDRAN ( *Alternate* )

CHIEF ENGINEER

Tamil Nadu Water Supply & Drainage Board,  
Madras

CHIEF ENGINEER

U. P. Jal Nigam, Lucknow

SUPERINTENDING ENGINEER ( *Alternate* )

CHIEF ENGINEER ( WATER )

Municipal Corporation of Delhi, Delhi

DRAINAGE ENGINEER ( *Alternate* )

SHRI L. M. CHOUDHARY

Public Health Engineering Department, Government  
of Harvana, ChandigarhSHRI J. CHANDRA ( *Alternate* )*( Continued on page 2 )*

© Copyright 1979

BUREAU OF INDIAN STANDARDS

This publication is protected under the *Indian Copyright Act* ( XIV of 1957 ) and reproduction in whole or in part by any means except with written permission of the publisher shall be deemed to be an infringement of copyright under the said Act.

( Continued from page 1 )

<i>Members</i>	<i>Representing</i>
CITY ENGINEER	Bombay Municipal Corporation
HYDRAULIC ENGINEER ( <i>Alternate</i> )	
SHRI H. N. DALLAS	Indian Institute of Architects, Bombay
LALA G. C. DAS	National Test House, Calcutta
SHRI T. R. DE	Institution of Engineers ( India ), Calcutta
DIRECTOR	Bombay Potteries & Tiles Ltd, Bombay
SHRI A. M. KEMHAVI ( <i>Alternate</i> )	
SHRI B. R. N. GUPTA	Engineer-in-Chief's Branch ( Army Headquarters )
SHRI K. V. KRISHNAMURTHY ( <i>Alternate</i> )	
SHRI M. T. KANSE	Directorate General of Supplies & Disposals, New Delhi
SHRI S. R. KSHIRSAGAR	National Environmental Engineering Research Institute ( CSIR ), Nagpur
SHRI R. C. REDDY ( <i>Alternate</i> )	
SHRI K. LAKSHMINARAYANAN	Hindustan Shipyard Ltd, Vishakhapatnam
SHRI A. SHARIFF ( <i>Alternate</i> )	
SHRI P. S. RAJVANSHI	Public Health Engineering Department, Government of Rajasthan, Jaipur
SHRI RANJIT SINGH	Railway Board ( Ministry of Railways )
DR A. V. R. RAO	National Buildings Organization, New Delhi
SHRI P. JAGANATH RAO	E. I. D.-Parry Ltd, Madras
SHRI M. MOOSA SULAIMAN ( <i>Alternate</i> )	
SHRI R. K. SOMANY	Hindustan Sanitaryware & Industries Ltd, Bahadurgarh
SUPERINTENDING SURVEYOR OF WORKS ( NDZ )	Central Public Works Department, New Delhi
SURVEYOR OF WORKS I ( NDZ ) ( <i>Alternate</i> )	
SHRI D. AJITHA SIMHA, Director ( Civ Engg )	Director General, BIS ( <i>Ex-officio Member</i> )

*Secretary*

SHRI S. P. MAGGU  
Assistant Direc.or ( Civ Engg ), BIS

Domestic Sanitary Appliances and Accessories Subcommittee.  
BDC 3 : 1

*Convener*

SHRI G. F. KHAMBATTI                      Bombay Municipal Corporation

*Members*

SHRI M. C. AGRAWAL	Indian Plastics Ltd, Bombay
SHRI N. L. BIRLA ( <i>Alternate</i> )	
ASSISTANT DIRECTOR, STANDARDS ( ARCHITECTURE ) ( RDSO )	Ministry of Railways
SHRI M. K. BASU	Central Glass & Ceramic Research Institute ( CSIR ), Ahmadabad
SHRI G. T. BRIDE	National Buildings Organization, New Delhi
SHRI O. P. RATRA ( <i>Alternate</i> )	

( Continued on page 6 )

*Indian Standard*  
SPECIFICATION FOR  
GLAZED FIRE-CLAY SANITARY APPLIANCES  
PART III SPECIFIC REQUIREMENTS OF URINALS  
Section I Slab Urinals  
( *Second Revision* )

0. FOREWORD

**0.1** This Indian Standard ( Part III/Sec 1 ) ( Second Revision ) was adopted by the Indian Standards Institution on 4 May 1979, after the draft finalized by the Sanitary Appliances and Water Fittings Sectional Committee had been approved by the Civil Engineering Division Council.

**0.2** This standard was first issued in 1958 and was revised in 1963 to cover requirements for additional glazed earthenware sanitary appliances, such as orissa pan, laboratory sink, squatting plate, slab and stall urinals and half-round channel. In this revision the scope of the standard has been restricted to cover requirements for glazed fire-clay sanitary appliances only since the glazed earthenware sanitary appliances were outdated as well as unhygienic. The Sectional Committee has found that only some of the sanitary appliances were being made in glazed fire-clay and therefore decided to cover the requirements for these appliances only in this revision. The general requirements applicable to all appliances and specific requirements for different types of appliances have been covered in separate parts of the standard. This standard ( Part III/Sec 1 ) lays down the specific requirements of slab urinals.

**0.3** For the purpose of deciding whether a particular requirement of this standard is complied with, the final value, observed or calculated, expressing the result of a test or analysis, shall be rounded off in accordance with IS : 2-1960\*. The number of significant places retained in the rounded off value should be the same as that of the specified value in this standard.

---

\*Rules for rounding off numerical values ( *revised* ).

**IS : 771 ( Part III/Sec 1 ) - 1979**

**1. SCOPE**

**1.1** This Indian Standard ( Part III/Sec 1 ) lays down the patterns, sizes, construction, dimensions, tolerances and finish of slab urinals made of fire-clay.

**2. REQUIREMENTS**

**2.1 General** — The general requirements for materials, manufacture, methods of test, sampling and inspection shall conform to IS : 771 ( Part I )-1979\*.

**2.2 Patterns and sizes** — Slab urinals shall be of one of the following pattern and sizes:

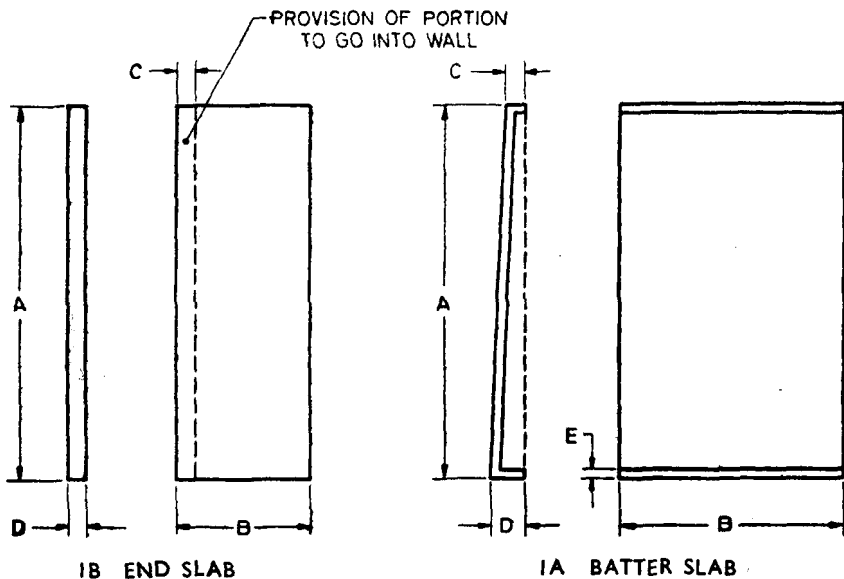
a) Batter slab ( see Fig. 1A )

1 000 × 600 mm or

1 000 × 4.0 mm

b) End slab ( see Fig. 1B )

1 000 × 360 mm



All dimensions in millimetres.

**FIG. 1 SLAB URINAL**

\*Specification for glazed fire-clay sanitary appliances: Part I General requirements ( second revision ).



**2.2.1** The slab urinals may be made in other patterns and sizes where so agreed to between the manufacturer and the purchaser. However, tolerances on dimensions shall be as specified in this standard.

**2.3 Construction** — Slab urinals shall be manufactured either as a single urinal or as a range of two urinals as specified by the purchaser. The inside surface of the urinals shall be regular and smooth throughout to ensure efficient flushing.

## 2.4 Dimensions and Tolerances

**2.4.1 Dimensions** — Slab urinals shall conform to the dimensions given in Table 1 read with Fig. 1.

**TABLE 1 DIMENSIONS OF SLAB URINALS**

( Clause 2.2, and Fig. 1 )

All dimensions in millimetres.

Sl. No.	PATTERN	SIZE	A	B	C	D	E
(1)	(2)	(3)	(4)	(5)	(6)	(7)	(8)
i)	Batter slab	1 000 × 600	1 000	600	50	80	25
		1 000 × 450	1 000	450	50	80	25
ii)	End slab	1 000 × 360	1 000	360	50	50	—

**2.4.2 Tolerances** — The following tolerances shall be allowed on the dimensions specified for slab urinals:

- a) On dimensions of 50 mm and over                    ± 4 percent
- b) On dimensions less than 50 mm                    ± 2 mm

## 3. MARKING

**3.1** Each slab urinal shall be clearly and indelibly marked at a prominent place with the name or trade-mark of the manufacturer.

**3.1.1** Each slab urinal conforming to the requirements specified in this standard may also be marked with the Standard Mark ,

NOTE — The use of the Standard Mark is governed by the provisions of the Bureau of Indian Standards Act, 1986 and the Rules and Regulations made thereunder. The Standard Mark on products covered by an Indian Standard conveys the assurance that they have been produced to comply with the requirements of that standard under a well defined system of inspection, testing and quality control which is devised and supervised by BIS and operated by the producer. Standard marked products are also continuously checked by BIS for conformity to that standard as a further safeguard. Details of conditions under which a licence for the use of the Standard Mark may be granted to manufacturers or producers may be obtained from the Bureau of Indian Standards.

**IS : 771 ( Part III/Sec 1 ) - 1979**

( Continued from page 2 )

<i>Members</i>	<i>Representing</i>
SHRI S. P. CHAKRABARTY	Central Building Research Institute ( CSIR ), Roorkee
CHIEF ENGINEER	Tamil Nadu Water Supply & Drainage Board, Madras
CHIEF ENGINEER ( WATER )	Municipal Corporation of Delhi
ADDITIONAL CHIEF ENGINEER ( WATER ) ( <i>Alternate</i> )	
CITY ENGINEER	Bombay Municipal Corporation
DIRECTOR	Bombay Potteries & Tiles Ltd, Bombay
SHRI A. M. KEMBHAVI ( <i>Alternate</i> )	
SHRI M. K. GANPULE	Parshuram Pottery Works Co Ltd, Thangadh
SHRI R. M. JOSHI ( <i>Alternate</i> )	
SHRI B. R. N. GUPTA	Ministry of Defence
SHRI K. V. KRISHNAMURTHY ( <i>Alternate</i> )	
SHRI M. T. KANSE	Directorate General of Supplies & Disposals, New Delhi
SHRI B. K. MALHAN	In personal capacity ( 9 Jain Mandir Road, New Delhi )
SHRI B. S. MIRCHANDANI	Phenoweld Polymer Private Limited, Bombay
SHRI A. S. MIRCHANDANI ( <i>Alternate</i> )	
SHRI D. APPUKUTTAN NAIR	Public Health Engineering Department, Govern- ment of Kerala
SHRI K. RAMACHANDRAN ( <i>Alternate</i> )	
SHRI B. J. PENTONY	Neiveli Ceramics & Refractories Limited
SHRI UMATOSH SARKAR ( <i>Alternate</i> )	
SHRI P. JAGANATH RAO	E. I. D. Parry Ltd, Madras
SHRI M. MOOSA SULAIMAN ( <i>Alternate</i> )	
SHRI L. R. SEHGAL	L. R. Sehgal & Company, New Delhi
SHRI AMAL KUMAR SEN	Bengal Enamel Works Ltd, Calcutta
SHRI R. K. SOMANY	Hindustan Sanitaryware & Industries Ltd, Bahadurgarh
SURVEYOR OF WORKS ( NDZ )	Central Public Works Department, New Delhi
SHRI S. A. TUNGARE	The Indian Institute of Architects, Bombay

## BUREAU OF INDIAN STANDARDS

### Headquarters:

Manak Bhavan, 9 Bahadur Shah Zafar Marg, NEW DELHI 110002  
Telephones: 323 0131, 323 3375, 323 9402  
Fax : 91 11 3234062, 91 11 3239399, 91 11 3239382

Telegrams : Manaksanstha  
(Common to all Offices)  
Telephone

### Central Laboratory :

Plot No. 20/9, Site IV, Sahibabad Industrial Area, Sahibabad 201010 8-77 00 32

### Regional Offices:

Central : Manak Bhavan, 9 Bahadur Shah Zafar Marg, NEW DELHI 110002 323 76 17

\*Eastern : 1/14 CIT Scheme VII M, V.I.P. Road, Maniktola, CALCUTTA 700054 337 86 62

Northern : SCO 335-336, Sector 34-A, CHANDIGARH 160022 60 38 43

Southern : C.I.T. Campus, IV Cross Road, CHENNAI 600113 235 23 15

†Western : Manakalaya, E9, Behind Marol Telephone Exchange, Andheri (East),  
MUMBAI 400093 832 92 95

### Branch Offices:

'Pushpak', Nurmohamed Shaikh Marg, Khanpur, AHMEDABAD 380001 550 13 48

‡Peenya Industrial Area, 1st Stage, Bangalore-Tumkur Road,  
BANGALORE 560058 839 49 55

Gangotri Complex, 5th Floor, Bhadbhada Road, T.T. Nagar, BHOPAL 462003 55 40 21

Plot No. 62-63, Unit VI, Ganga Nagar, BHUBANESHWAR 751001 40 36 27

Kalaikathir Buildings, 670 Avinashi Road, COIMBATORE 641037 21 01 41

Plot No. 43, Sector 16 A, Mathura Road, FARIDABAD 121001 8-28 88 01

Savitri Complex, 116 G.T. Road, GHAZIABAD 201001 8-71 19 96

53/5 Ward No.29, R.G. Barua Road, 5th By-lane, GUWAHATI 781003 54 11 37

5-8-56C, L.N. Gupta Marg, Nampally Station Road, HYDERABAD 500001 20 10 83

E-52, Chitaranjan Marg, C-Scheme, JAIPUR 302001 37 29 25

117/418 B, Sarvodaya Nagar, KANPUR 208005 21 68 76

Seth Bhawan, 2nd Floor, Behind Leela Cinema, Naval Kishore Road,  
LUCKNOW 226001 23 89 23

NIT Building, Second Floor, Gokulpat Market, NAGPUR 440010 52 51 71

Patliputra Industrial Estate, PATNA 800013 26 23 05

Institution of Engineers (India) Building 1332 Shivaji Nagar, PUNE 411005 32 36 35

T.C. No. 14/1421, University P. O. Palayam, THIRUVANANTHAPURAM 695034 6 21 17

---

Sales Office is at 5 Chowringhee Approach, P.O. Princep Street,  
CALCUTTA 700072 27 10 85

†Sales Office is at Novelty Chambers, Grant Road, MUMBAI 400007 309 65 28

‡Sales Office is at 'F' Block, Unity Building, Narashimaraja Square,  
BANGALORE 560002 222 39 71